

S106 PART B: Business Case

| | |
|---------------------------------------|---|
| S106 PROJECT TITLE | Outdoor Fitness Equipment – Abbey Pools |
| Lead project officer (name/job title) | Julie Durrant– Recreation Technical Officer |
| Service manager (name/job title) | Ian Ross – Sport & Recreation Manager |
| Who prioritised this project? | East Area Committee |
| When was this project prioritised? | 07/04/2016 |

IMPLICATIONS

Please confirm you have taken corporate advice in developing this Part B. Delete 'Yes/No' as applicable.

| | |
|---|-----|
| S106: I have referred to the relevant S106 priority-setting report & minutes. I have consulted the Developer Contributions Monitoring Unit [DCMU] (ext. 7313) on the eligibility of the project (as now proposed) for S106 funding and the availability of appropriate contributions. | Yes |
| VAT: I have consulted the (VAT and Treasury Accountant, ext. 8153) on the VAT implications of the project and have obtained the following comment (must be included): "There are no adverse VAT implications for undertaking this project." Received from Steve Bevis on the 01/03/17 after his review of the answers to questions that he requested. | Yes |
| Procurement: This project has now been awarded to a contractor following the successful procurement process using the Councils ProContract system. | Yes |
| Equality impact assessment: I have carried out an Equality Impact Assessment for the project <u>and</u> attach a copy. | Yes |
| Climate Change rating: I have sent the completed Climate Change rating tool to the Climate Change Officer <u>and</u> attach a copy of the form. | Yes |

B1 ABOUT THIS PROJECT *(please seek advice from the Developer Contributions Monitoring Unit)*

| | | |
|------|---|---|
| B1.1 | Summarise the purpose of this project? | The purpose of the project is to install outdoor fitness equipment at the side of Abbey Pools. The equipment will provide a boot camp style fitness opportunity within the most deprived ward of the City which also has the high levels of obesity and sedentary behaviours. The equipment will be free to use, engaging and fun, and can lead to healthier lifestyles and behaviours. |
| B1.2 | In which Cambridge ward is it located? | East |
| B1.3 | Would the project be delivered by the council or via a S106 grant? | To be project managed by Community Services. |
| B1.4 | What conditions were placed on the S106 funding allocation when prioritised? | None |
| B1.5 | Were any queries/issues about the proposals highlighted in the S106 report? | None |
| B1.6 | How much S106 funding was provisionally allocated to the proposal when prioritised? | £40,000 of devolved Outdoor Sports from East Area. |
| B1.7 | Since it was prioritised, what has been done to develop the project in more detail? | Meeting with two individuals from the Friends of Coldhams Common, and an online survey, and procurement process. |

| | | |
|-------|--|---|
| B1.8 | How much S106 funding is now sought (and from which contribution types)? | £39,663.84 - Outdoor Sports – Formal Open Space |
| B1.9 | What are the reasons for any change in the amount/type of S106 funding requested? | None |
| B1.10 | How much non-S106 funding is being invested in this project (and from where?) | Nil |
| B1.11 | Developer Contributions Monitoring Unit's comments on project as now proposed. This Scheme can be funded from local S106 contributions for Outdoor Sport facilities. The scheme was considered by Capital Programme Board in September 2016 and delivery timescales updated in April 2018 following a full procurement process. | |

FINANCIAL APPRAISAL

| B2 CAPITAL FUNDING SUMMARY (see Appendix A for details) | |
|--|-------------|
| Total capital costs | £ 39,663.84 |
| Capital funding still needed | £ 0 |

| B3 REVENUE BUDGET SUMMARY (see Appendix B for details) | | | | | |
|---|---------|---------|---------|---------|-----------------|
| | 2016/17 | 2017/18 | 2018/19 | 2019/20 | Annual on-going |
| Total annual revenue costs | £0 | £0 | £0 | £0 | £0 |
| Revenue funding still needed | £0 | £0 | £0 | £0 | £0 |

| B4 HOW THE PROPOSALS HAVE DEVELOPED SINCE S106 PRIORITY-SETTING | |
|---|--|
| How have the conditions and issues/queries highlighted in B1.4 and B1.5 been addressed? | |
| None highlighted | |

B5 CONSULTATION FEEDBACK ON CONSULTATION PROPOSALS

To ensure that the project (as now proposed) is still eligible for S106 funds and the allocations are still suitable, consultation needs to be carried out (if appropriate) before the business case is considered.

B5a. What consultation has been carried out on this project?

Consultation with Streets and Open spaces team has taken place to discuss the use of potential spaces around the swimming pool and astroturf and on the fringes of Coldhams Common, for the installation of the fitness equipment.

An online survey has been carried out on these locations and findings reported back to CPB, and there have been no changes to the location since then.

B5b. What were the main consultation findings?

An online survey was available on the Councils website, from the 18th May until 19th June 2016 which collected views on where to site the fitness equipment. Of the 38 responses received Option A by the side of the pool was favoured by 21 respondents with the next favoured position being tied on 6 votes each. Only 1 response was received that none of the locations were suitable. Of the 38 respondents 31 of them said that they would use the equipment and 4 responding that they wouldn't.

There were a number of comments regarding the general area by the pool itself and how respondents would like to see this area tidied up, shrubbery cleared, painting of the bridge, tidying the paths and additional lighting. (Some of this has already been addresses such as improved lighting and the remaining items can be addressed with the Streets and Open Spaces Team when the project is rolled out.)

Officers from Arts & Recreation and the Open Spaces Team met with members of the Friends of Coldhams Common group following their request to meet on site to discuss the project. Whilst they supported the scheme and its objectives, they did not agree with the any of the proposed locations and offered alternative locations outside of those of being consulted on (these being within the overflow car park at the pool). Officers considered these options but they concluded they were not suitable alternative locations for the equipment.

Ward Councillors have been consulted on the project and are happy for it to progress and be installed in the proposed location. The Executive Councillor for Communities and the Executive Councillor for City Centre and Public Places were consulted on the survey findings and on the alternative proposals put forward by the Friends of the common group and agreed with the officers recommendations that they were not suitable alternatives for the project delivery and instructed officers to progress as per the results of the survey. They also agreed that following Capital Programme Board assessment the project could seek final views through the Chair, Vice Chair and Spokes from East Area Committee and no further reports would be required.

B5c. How have these consultation findings been taken into account?

Relevant findings have been taking into consideration and included within the procurement process.

COMMERCIAL APPRAISAL

B6 PROCUREMENT STRATEGY

Target dates [month and year] for major procurement elements of the project (where appropriate):

| | |
|---------------------------|-------------------------------|
| Start of procurement | 7 th February 2018 |
| Award of Contract | 26 th March 2018 |
| Start of project delivery | May 2018 |
| Completion of project | August 2018 |

B7 STAFFING AND EXTERNAL CONTRACTOR RESOURCES

| Skill/level/person | Estimated no. hours | Expected start | Expected finish |
|-----------------------|---------------------|----------------|-----------------|
| Project Manager | 2 | May 2018 | August 2018 |
| Project team expert | 12 | January 2018 | August 2018 |
| Contractor/Consultant | 120 | April 2018 | August 2018 |
| Legal | 2 | May 2018 | May 2018 |
| Procurement | 4 | January 2018 | April 2018 |

B8 WIDER STAFF IMPLICATIONS

None Anticipated

B9 EQUALITIES AND ANTI-POVERTY IMPLICATIONS

None – All are addressed within the project to allow full accessibility and this is a free facility for the general public. (Open at all times). An EQIA has been completed.

B10 CLIMATE CHANGE RATING

The overall rating of 0 has been derived as the Low positive and the Low negative cancel each other out.

B11 OTHER IMPACTS

None anticipated – weather and ground conditions will be regularly monitored to ensure the works do not detrimentally impact on the open space.

B12 RISK ASSESSMENT

There is a contingency built into the project in case of a hold up due to adverse weather conditions,

B13 ANTICIPATED TIMETABLE

| Stage/Milestone | Outcome/Deliverable | Date of Completion |
|------------------------|---------------------|--------------------|
| Capital Programme | Sign Off | August 2017 |
| Engage Contractor | Award Contract | March 2018 |
| Start on Site Delivery | Start | May 2018 |
| Completion on Site | Finish | August 2018 |

Capital costs & income profile

Appendix A

| | 2016/17 | 2017/18 | 2018/19 | 2019/20 | Comments |
|--|-----------|-----------|-------------------|----------|----------|
| CAPITAL COSTS | | | | | |
| Building contractor / works | £0 | £0 | £39,663.84 | £0 | |
| Purchase of vehicles, plant & equipment (including IT infrastructure & costs) | £0 | £0 | £0 | £0 | |
| Professional / Consultants fees | £0 | £0 | £0 | £0 | |
| Other capital expenditure (<i>please specify</i>): | £0 | £0 | £0 | £0 | |
| Total Capital costs | £0 | £0 | £39,663.84 | £ | |

| | | | | | |
|--|-----------|-----------|-------------------|-----------|----------------------------------|
| CAPITAL INCOME | | | | | |
| Government Grant | | | | | |
| Developer contributions | £0 | £0 | £39,663.84 | £0 | Outdoor Sports – East Area Funds |
| R&R funding (if applicable) | £0 | £0 | £0 | £0 | |
| Earmarked Funds | £0 | £0 | £0 | £0 | |
| Existing (council) capital programme funding | £0 | £0 | £0 | £0 | |
| Other sources (please specify) | £0 | £0 | £0 | £0 | |
| Total Capital income | £0 | £0 | £39,663.84 | £0 | |
| | | | | | |
| NET CAPITAL BID | £0 | £0 | £0 | £0 | |

Revenue costs and income profile

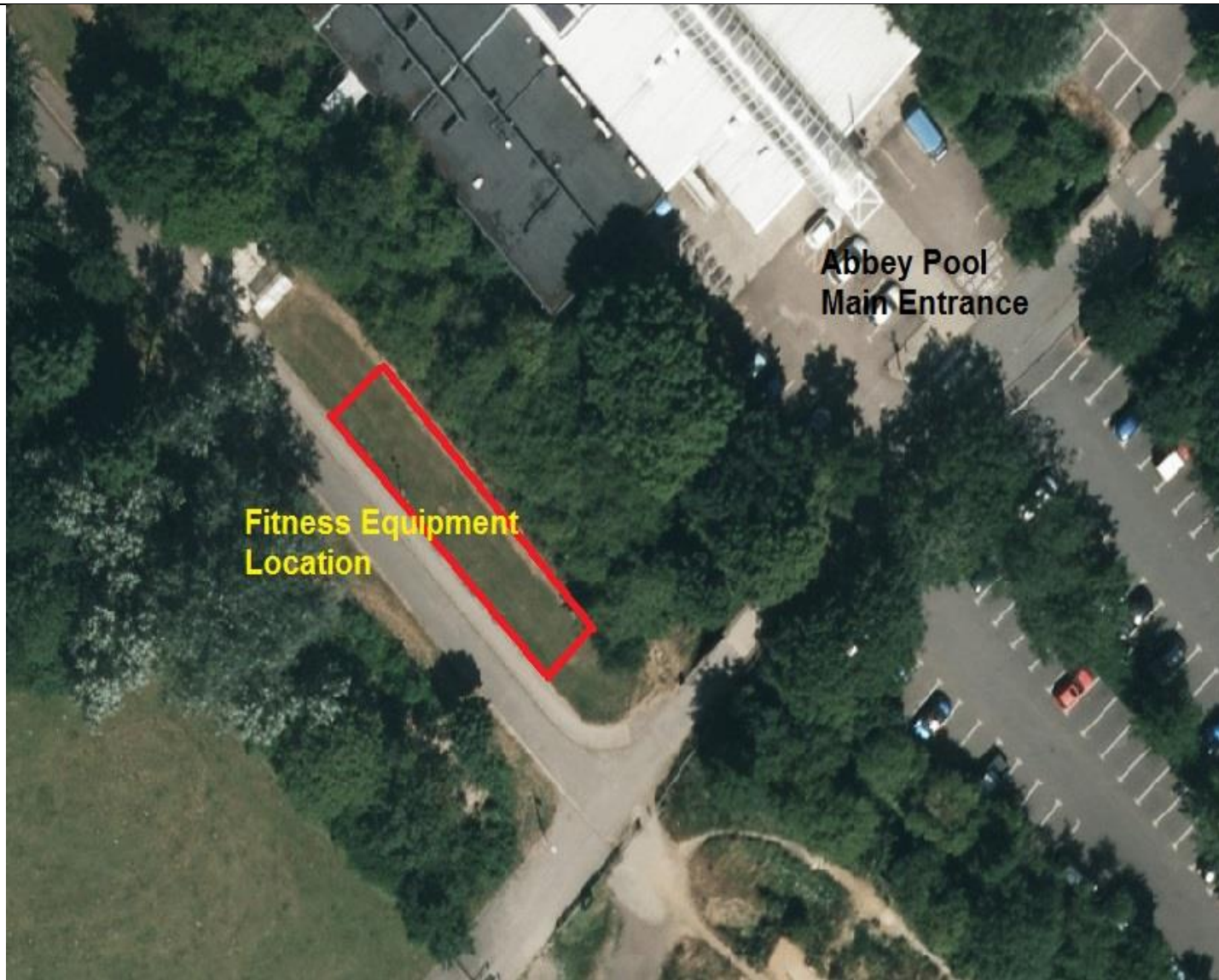
Appendix B

| | 2015/16 | 2016/17 | 2017/18 | 2018/19 | 2019/20 | Comments |
|----------------------------|---------|---------|---------|---------|---------|----------|
| Maintenance | £0 | £0 | £0 | £0 | £0 | |
| Insurance | £0 | £0 | £0 | £0 | £0 | |
| Operating costs | £0 | £0 | £0 | £0 | £0 | |
| Staff (savings)/costs | £0 | £0 | £0 | £0 | £0 | |
| Energy (savings)/costs | £0 | £0 | £0 | £0 | £0 | |
| Other (savings)/costs | £0 | £0 | £0 | £0 | £0 | |
| Total Revenue costs | | | | | | |

| | | | | | | |
|--|----|----|----|----|----|--|
| Existing revenue budget provision | £0 | £0 | £0 | £0 | £0 | This figure is unknown from current S&OS budgets |
|--|----|----|----|----|----|--|

| | | | | | | |
|---------------------------------|-----------|-----------|-----------|-----------|-----------|--|
| NET REVENUE IMPLICATIONS | £0 | £0 | £0 | £0 | £0 | |
|---------------------------------|-----------|-----------|-----------|-----------|-----------|--|

The revenue budget will remain the same as existing which is allocated from the Recreation Cost Centre for general maintenance.



Abbey Pool – Proposed Fitness Equipment Location – As supported via the consultation process



Abbey Pool – Fitness Equipment Layout and equipment to be installed